



GAT MONTHLY MEMBERSHIP PROGRESS REPORT

Results as of: 5/31/2023

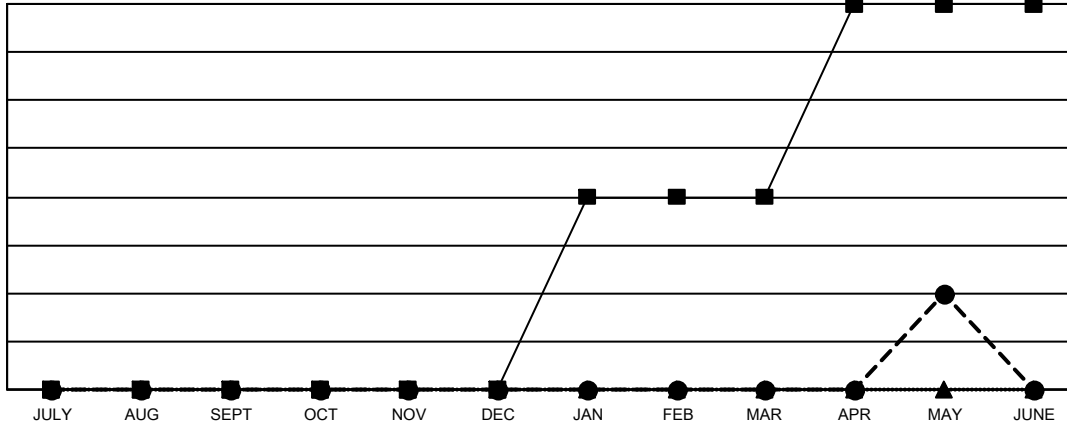
Multiple District 36

LOCATION: OREGON

| Clubs | | | |
|-----------------------|---------------|-----------|---------------|
| RESULTS FOR 2022-2023 | | | |
| QUARTER | NEW CLUB GOAL | NEW CLUBS | DROPPED CLUBS |
| JULY/AUG/SEPT | 0 | 0 | 2 |
| OCT/NOV/DEC | 0 | 0 | 1 |
| JAN/FEB/MAR | 2 | 0 | 1 |
| APR/MAY/JUNE | 2 | 1 | 0 |

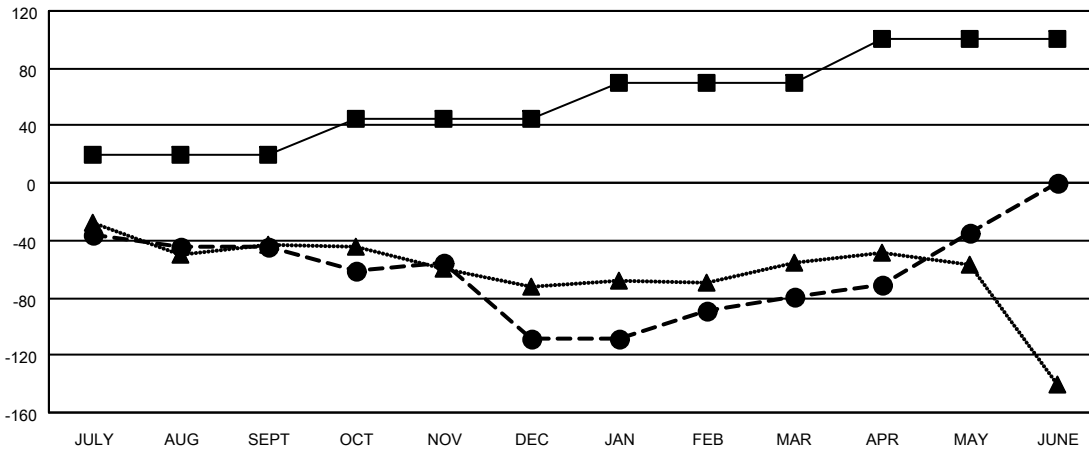
| Members | | | |
|-----------------------|------------------------|----------------------|--|
| RESULTS FOR 2022-2023 | | | |
| QUARTER | MEMBER GROWTH NET GOAL | MEMBER GROWTH ACTUAL | DROPPED MEMBERS ACTUAL (including transfers) |
| JULY/AUG/SEPT | 20 | 102 | 129 |
| OCT/NOV/DEC | 25 | 84 | 141 |
| JAN/FEB/MAR | 25 | 108 | 70 |
| APR/MAY/JUNE | 31 | 97 | 40 |

GOALS AND ACTUAL NEW CLUBS CUMULATIVE



- - CURRENT YEAR GOALS FOR NEW CLUBS
- - CURRENT YEAR ACTUAL NEW CLUBS
- ▲ - LAST YEAR ACTUAL NEW CLUBS

GOALS AND ACTUAL MEMBERS CUMULATIVE



- - MEMBER GROWTH NET GOAL
- - MEMBER GROWTH ACTUAL
- ▲ - LAST YEAR MEMBERSHIP ACTUAL

| | |
|------------------------|------------|
| DROPPED CLUBS: 4 | |
| DROPPED MEMBERS | |
| DECEASED | 67 |
| CLUB CANCELLED | 17 |
| OTHER | 296 |
| TOTAL | 380 |

73 CLUBS OF 128 ADDED 1 OR MORE NEW MEMBERS

[CLICK HERE FOR CUMULATIVE MEMBERSHIP DATA](#)

| GENDER DISTRIBUTION | |
|---------------------------------|----------------|
| MALE | 1,653 (57.50%) |
| FEMALE | 1,221 (42.47%) |
| NON BINARY | 1 (0.03%) |
| PREFER NOT TO ANSWER | 0 (0.00%) |
| TOTAL FAMILY UNIT MEMBERS | 740 |
| FAMILY MEMBERS PAYING HALF DUES | 378 |